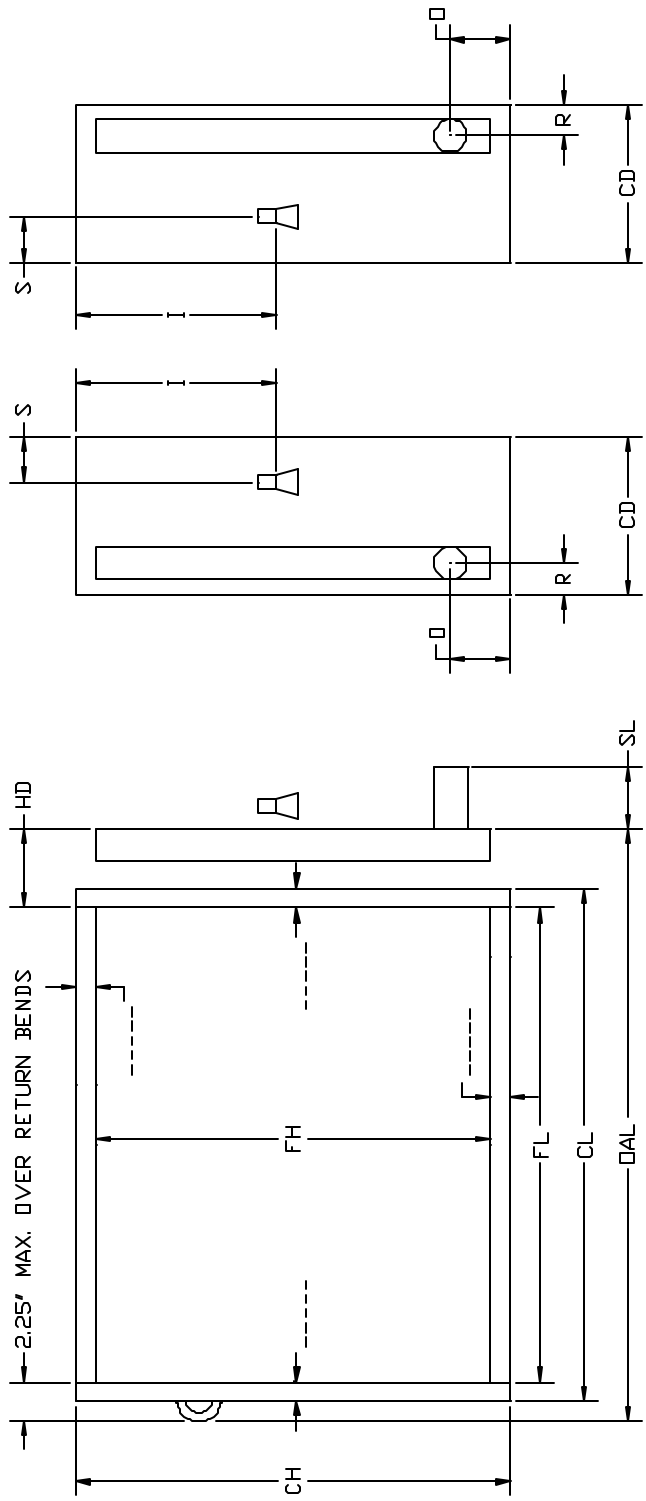


DIRECT EXPANSION COIL



TUBE SUPPORTS REQUIRED YES NO

ALL DIMENSIONS IN INCHES

| ITEM | QTY | ROWS | FPI | FH | FL | CH | CL | CD | HD | OAL | SL | X | SUPPLY | | | RETURN | | |
|------|-----|------|-----|----|----|----|----|----|----|-----|----|---|--------|---|---|--------|--|--|
| | | | | | | | | | | | | | I | S | O | R | | |
| | | | | | | | | | | | | | | | | | | |

NOTES:

Coilmaster
CORPORATION
440 INDUSTRIAL DRIVE
MOSCOW, TN 38057
(P) 888.302.6049
(P) 901.877.3333
(F) 901.877.3335

CUSTOMER

W.O.

MODEL

P.O.#

MATERIAL LIST

TUBES
 3/8" 1/2" 5/8"
 .014 .016 .020
 .022 .025 .025
 .035 .049

AL FINS
 .006 Cu FINS
 .0075 .006
 .010 .0075

CASING HEADERS
 Galv. Type L Cu
 304SS Other

LIQUID
 Al Cu

DIST: _____"

SUCTION
 DIA SWT: _____"

REFRIGERANT DISTRIBUTOR
 STANDARD FOR SUPPLY
 CONNECTION

EXPANSION VALVES NOT
 PROVIDED BY COILMASTER

COILS ARE TESTED UNDER
 WATER CHARGED WITH
 550 PSI DRY NITROGEN

TUBE SUPPORTS ARE
 RECOMMENDED FOR ALL
 COILS EXCEEDING 50
 INCHES OF FIN LENGTH