

NON-FREEZE STEAM COIL

MATERIAL LIST

TUBES

5/8" 1"
 .025 .035
 .035

Al FINS Cu FINS
 .006 .006
 .0075 .0075
 .010 .010

CASING HEADERS

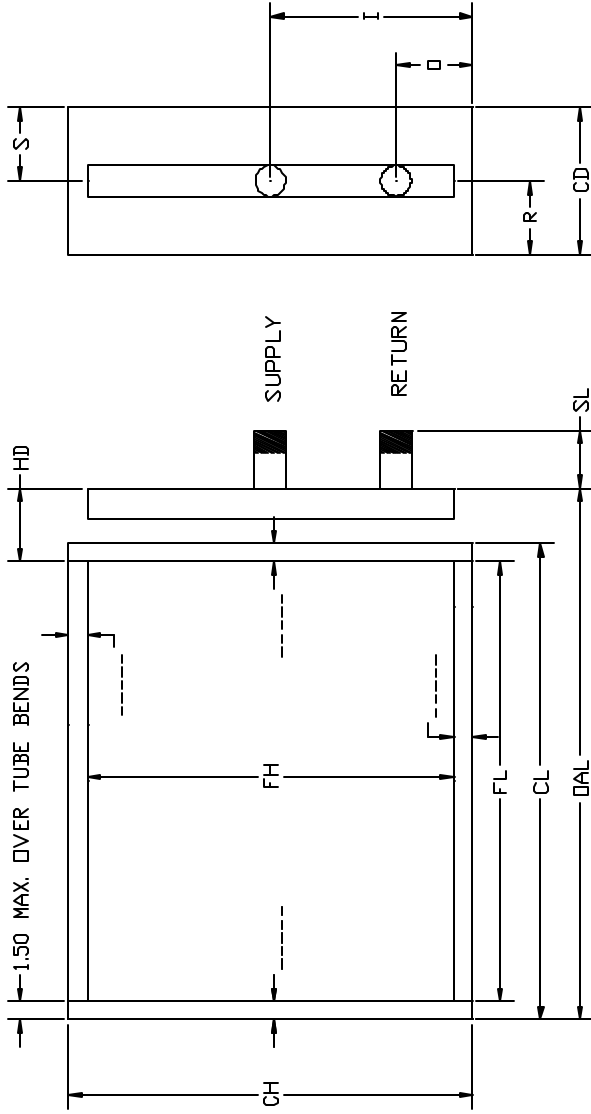
Galv. Type L Cu
 304SS Other

Al Cu

SUPPLY RETURN

SWT SWT
 MPT MPT
 FPT FPT
 FLG FLG

DIA: _____" DIA: _____"



TUBE SUPPORTS REQUIRED YES NO

ALL DIMENSIONS IN INCHES

ITEM	QTY	ROWS	FPI	FH	FL	CH	CL	CD	HD	OAL	SL	X	SUPPLY			RETURN		
													I	S	O	R		

NOTES:

CUSTOMER

Coilmaster
 CORPORATION
 440 INDUSTRIAL DRIVE
 MOSCOW, TN 38057
 (P) 888.302.6049
 (P) 901.877.3333
 (F) 901.877.3335

W.O.

MODEL

P.O.#

.025 WALL COPPER
 TUBING STANDARD

STEAM PRESSURE
 100 LBS. MAX

COILS ARE TESTED UNDER
 WATER CHARGED WITH
 550 PSI DRY NITROGEN

TUBE SUPPORTS ARE
 RECOMMENDED FOR ALL
 COILS EXCEEDING 50
 INCHES OF FIN LENGTH