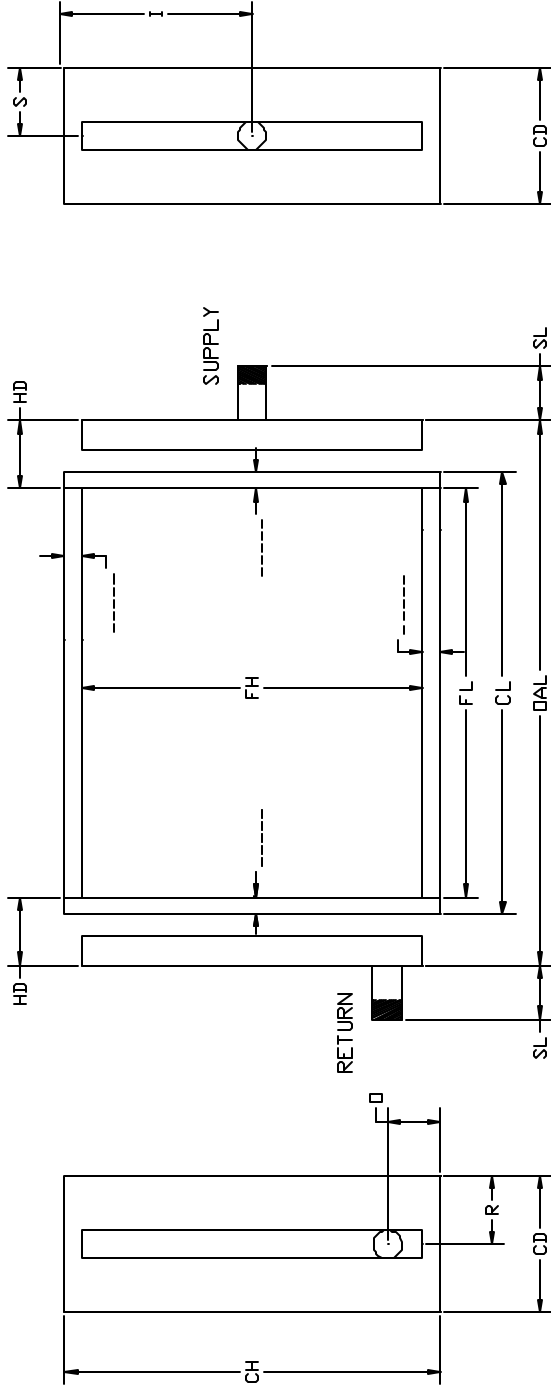


**STANDARD STEAM COIL  
OPPOSITE END CONNECTIONS**



TUBE SUPPORTS REQUIRED  YES  NO

DIA: \_\_\_\_\_" DIA: \_\_\_\_\_"

**MATERIAL LIST**

5/8" TUBES

- .025
- .035
- .049

- Al FINS  .006  .0075  .010
- Cu FINS  .006  .0075

- CASING  Galv.  304SS  Al  Cu
- HEADERS  Type L Cu  Other

- SUPPLY  SWT  MPT  FPT  FLG
- RETURN  SWT  MPT  FPT  FLG

.025 WALL COPPER  
TUBING STANDARD

STEAM PRESSURE  
100 LBS. MAX

COILS ARE TESTED UNDER  
WATER CHARGED WITH  
550 PSI DRY NITROGEN

TUBE SUPPORTS ARE  
RECOMMENDED FOR ALL  
COILS EXCEEDING 50  
INCHES OF FIN LENGTH

**ALL DIMENSIONS IN INCHES**

ITEM	QTY	ROWS	FPI	FH	FL	CH	CL	CD	HD	OAL	SL	X	SUPPLY			RETURN		
													I	S	O	R		

**NOTES:**

CUSTOMER

**Coilmaster**  
CORPORATION  
440 INDUSTRIAL DRIVE  
MOSCOW, TN 38057  
(P) 888.302.6049  
(P) 901.877.3333  
(F) 901.877.3335

W.O.

MODEL

P.O.#